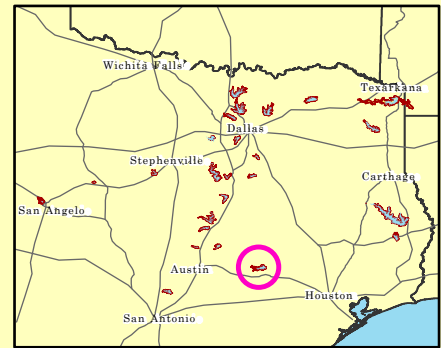


SOMERVILLE LAKE

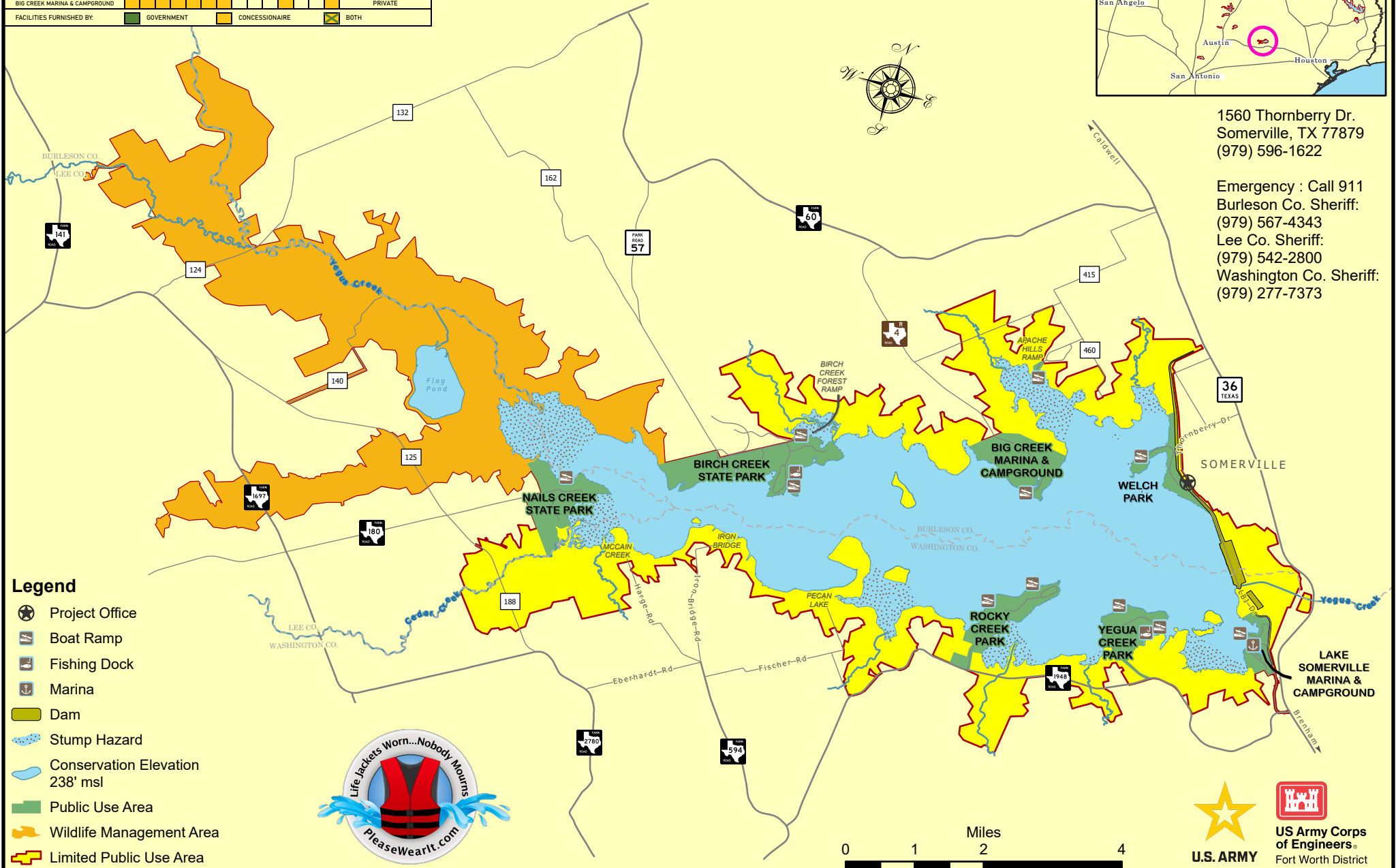
Capital Region Office



1560 Thornberry Dr.
Somerville, TX 77879
(979) 596-1622

Emergency : Call 911
Burleson Co. Sheriff:
(979) 567-4343
Lee Co. Sheriff:
(979) 542-2800
Washington Co. Sheriff:
(979) 277-7373

Website	FACILITIES FURNISHED BY:										OPERATING AGENCY	
	CAMPING AREA/DAM	ELECTRICAL RE/TRANSFORMERS	SEWER TREATMENT	SEWER TREATMENT	WATER STATION	SWIMMING	PICNIC SITES	SWIMMING AREA	PLAYGROUND	PERMITS FACILITIES		TOWELS
YEGUA CREEK PARK	GOVERNMENT	GOVERNMENT	GOVERNMENT	GOVERNMENT	GOVERNMENT	GOVERNMENT	GOVERNMENT	GOVERNMENT	GOVERNMENT	GOVERNMENT	GOVERNMENT	CORPS OF ENGINEERS
ROCKY CREEK PARK	GOVERNMENT	GOVERNMENT	GOVERNMENT	GOVERNMENT	GOVERNMENT	GOVERNMENT	GOVERNMENT	GOVERNMENT	GOVERNMENT	GOVERNMENT	GOVERNMENT	CORPS OF ENGINEERS
NAILS CREEK STATE PARK	GOVERNMENT	GOVERNMENT	GOVERNMENT	GOVERNMENT	GOVERNMENT	GOVERNMENT	GOVERNMENT	GOVERNMENT	GOVERNMENT	GOVERNMENT	GOVERNMENT	STATE OF TEXAS
BIRCH CREEK STATE PARK	GOVERNMENT	GOVERNMENT	GOVERNMENT	GOVERNMENT	GOVERNMENT	GOVERNMENT	GOVERNMENT	GOVERNMENT	GOVERNMENT	GOVERNMENT	GOVERNMENT	STATE OF TEXAS
WELCH PARK	GOVERNMENT	GOVERNMENT	GOVERNMENT	GOVERNMENT	GOVERNMENT	GOVERNMENT	GOVERNMENT	GOVERNMENT	GOVERNMENT	GOVERNMENT	GOVERNMENT	CITY OF SOMERVILLE
SOMERVILLE MARINA & CAMPGROUND	CONCESSIONAIRE	CONCESSIONAIRE	CONCESSIONAIRE	CONCESSIONAIRE	CONCESSIONAIRE	CONCESSIONAIRE	CONCESSIONAIRE	CONCESSIONAIRE	CONCESSIONAIRE	CONCESSIONAIRE	CONCESSIONAIRE	PRIVATE
BIG CREEK MARINA & CAMPGROUND	CONCESSIONAIRE	CONCESSIONAIRE	CONCESSIONAIRE	CONCESSIONAIRE	CONCESSIONAIRE	CONCESSIONAIRE	CONCESSIONAIRE	CONCESSIONAIRE	CONCESSIONAIRE	CONCESSIONAIRE	CONCESSIONAIRE	PRIVATE



- Legend**
- Project Office
 - Boat Ramp
 - Fishing Dock
 - Marina
 - Dam
 - Stump Hazard
 - Conservation Elevation 238' msl
 - Public Use Area
 - Wildlife Management Area
 - Limited Public Use Area



The U. S. Army Corps of Engineers has provided these spatial data as a representation of the various geographic information gathered from multiple sources. These data should be viewed only as a representation of the provided information and should not be used for any other purpose. No guarantee is made by the U. S. Army Corps of Engineers regarding the accuracy or completeness of the data or their suitability for a particular use.